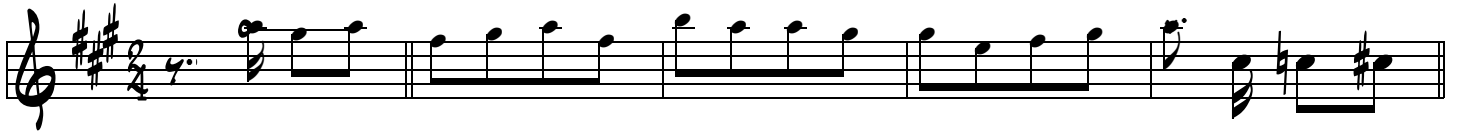


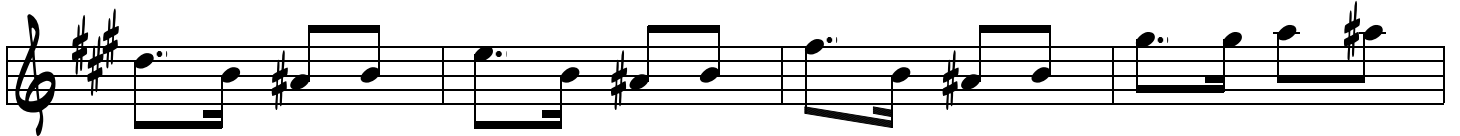
C'EST CARNAVAL

Tempo di Marche Disco

Mélie instruments mi bémol



Refrain



AL CODA



Couplet



CO ⊕ DA

The image displays a musical score for the piece 'C'EST CARNAVAL'. It begins with a treble clef and a key signature of one sharp (F#). The first staff contains a melodic line with a repeat sign and a fermata. Above this staff, the text 'CO ⊕ DA' is written, with a circled plus sign. The second staff starts with a new key signature of two sharps (F# and C#) and a 2/4 time signature. The score consists of eight staves of music, featuring various rhythmic patterns, accidentals, and dynamic markings such as accents (v) and slurs. The final staff concludes with a double bar line and a fermata.