

DE BRASILIA à MEXICO

Christian Peschel & Dominique Bellot

TEMPO: SAMBA

Mélodie instruments mi bémol

First musical staff in treble clef, key signature of two sharps (F# and C#), and 4/4 time signature. It begins with a treble clef, followed by a key signature change to two sharps, and a 4/4 time signature. The melody consists of eighth and quarter notes. A first ending bracket is present at the end of the staff, marked with a circled 'S' and a slash.

Second musical staff, continuing the melody. It features a first ending bracket with the instruction "APRES LA REPRISE AL CODA" and a circled 'C' with a cross. The staff concludes with a double bar line and repeat dots.

2.

Third musical staff, featuring triplet markings (indicated by a '3' over a bracket) over groups of three notes. It includes a first ending bracket.

1.

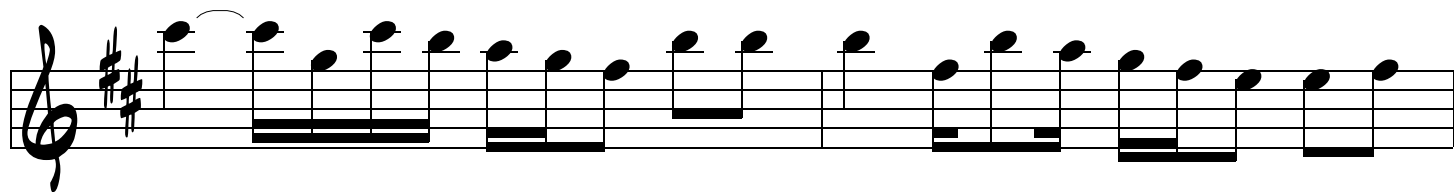
Fourth musical staff, featuring triplet markings over groups of three notes. It includes a first ending bracket.

1.

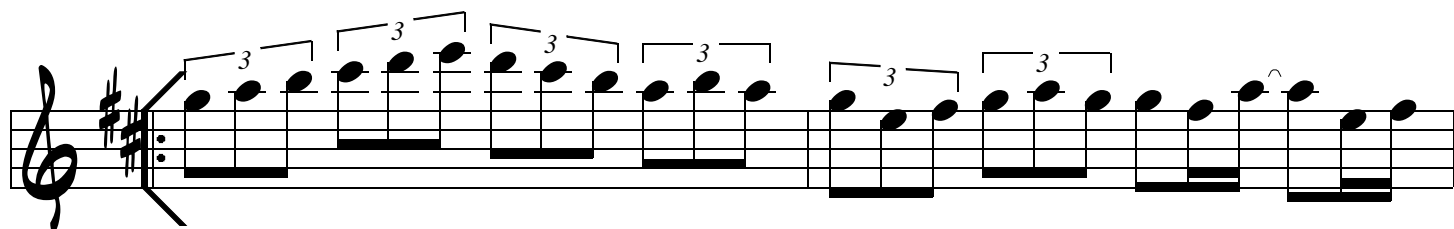
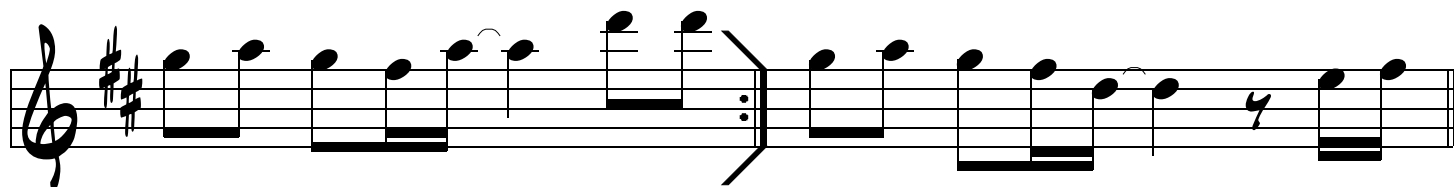
2.

Fifth musical staff, featuring triplet markings over groups of three notes. It includes a first ending bracket.

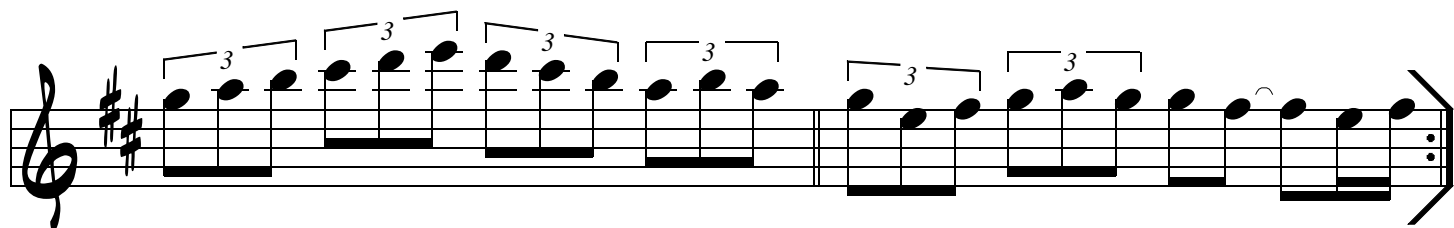
Sixth musical staff, featuring triplet markings over groups of three notes. It concludes with a double bar line and repeat dots.



1. | 2.



1.



2.

