

EL PASO DE ALMERIA

Dominique Bellot

Mélodie instruments si bémol

$\text{♩} = 123$ D.C.

First musical staff, treble clef, key signature of two sharps (F# and C#), 2/4 time signature. It begins with a repeat sign and contains several chords with accents (>) and a dynamic marking (v).

1.

Second musical staff, treble clef, key signature of two sharps, 2/4 time signature. It continues the melody with various note values, slurs, and dynamic markings (v).

2.

Third musical staff, treble clef, key signature of two sharps, 2/4 time signature. It features a series of eighth notes, slurs, and dynamic markings (v).

Fourth musical staff, treble clef, key signature of two sharps, 2/4 time signature. It contains a sequence of eighth notes and quarter notes.

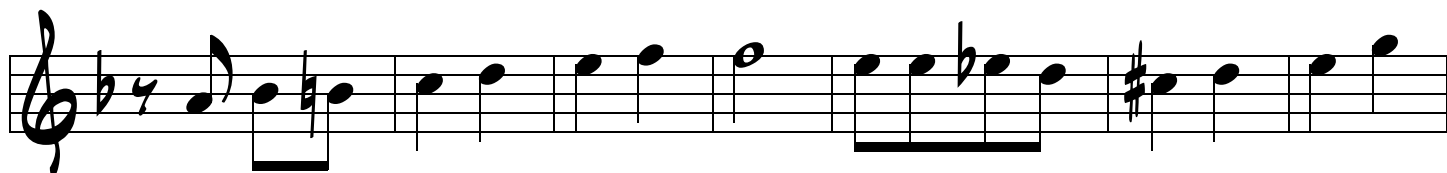
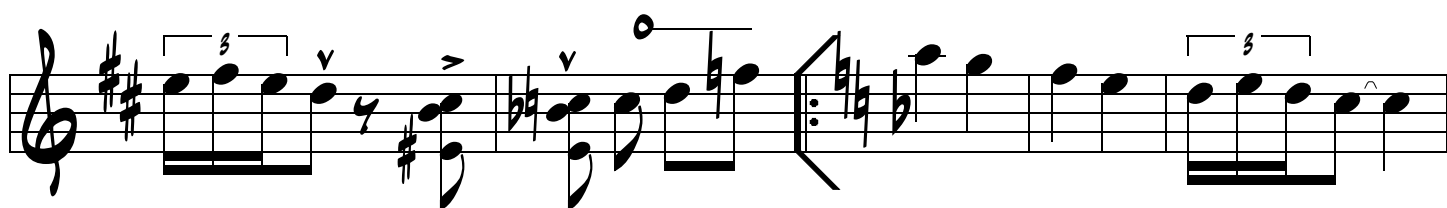
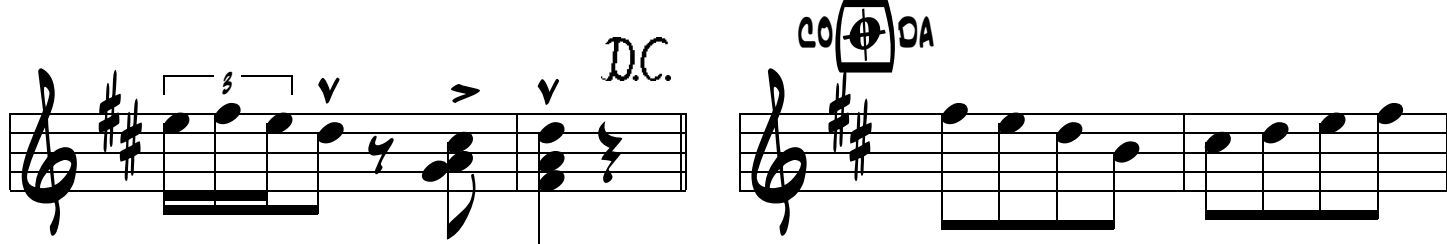
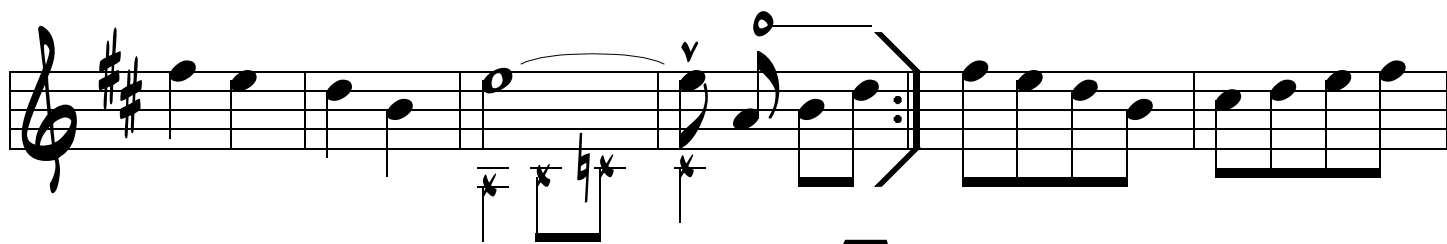
Fifth musical staff, treble clef, key signature of two sharps, 2/4 time signature. It includes a triplet of eighth notes and dynamic markings (v).

Sixth musical staff, treble clef, key signature of two sharps, 2/4 time signature. It features a triplet of eighth notes, slurs, and dynamic markings (v).

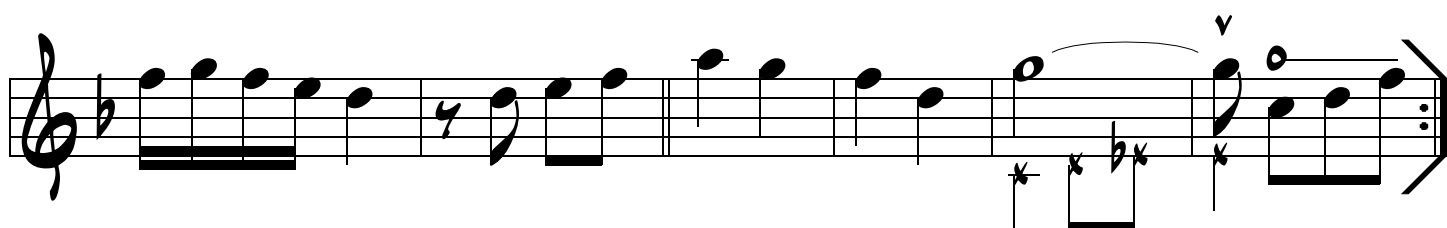
Seventh musical staff, treble clef, key signature of two sharps, 2/4 time signature. It concludes the piece with a triplet of eighth notes and a final note.



a. 2.



1.



2.

