

# El Salamanque

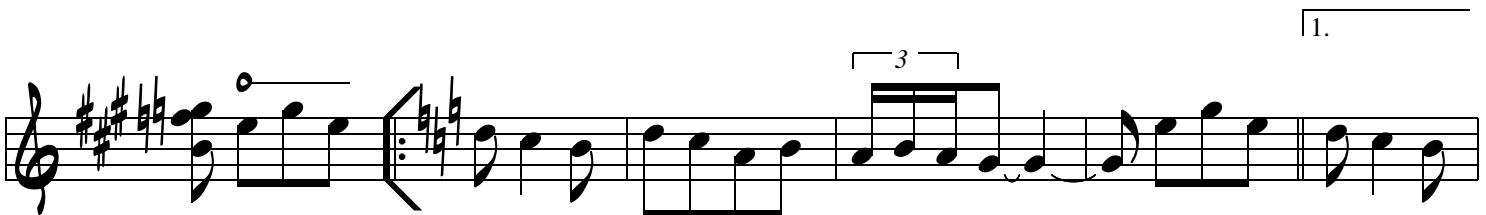
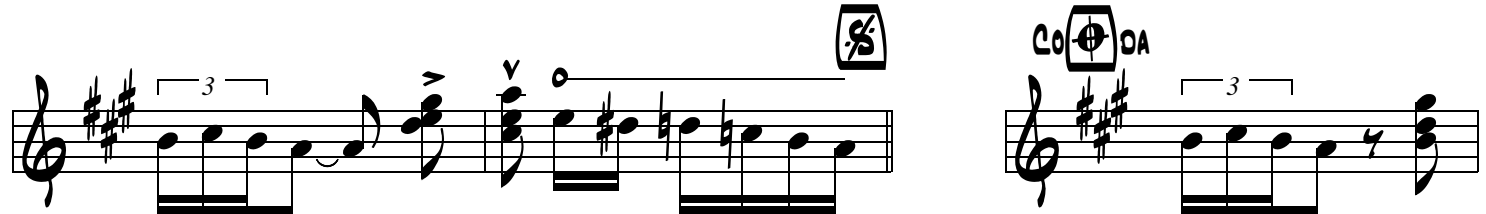
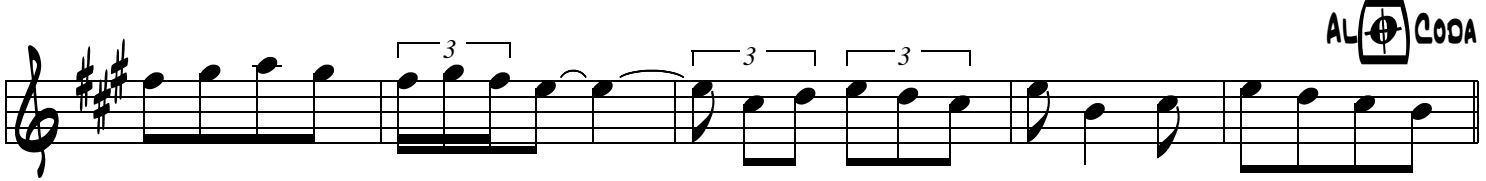
Marc Provance - Jean Harduin - Dominique Bellot

## Mélodie instruments si bémol

Tempo di Paso Doble

The musical score for 'El Salamanque' is written in 2/4 time with a key signature of one flat (B-flat). It begins with a common time signature 'C' and a 'Tempo di Paso Doble' instruction. The score consists of ten staves of music. The first staff contains a treble clef, a key signature change to one flat, and a common time signature 'C'. The music features a variety of rhythmic patterns, including eighth and sixteenth notes, and several triplet markings. The piece concludes with a double bar line. The score includes first and second endings, indicated by '1.' and '2.'.

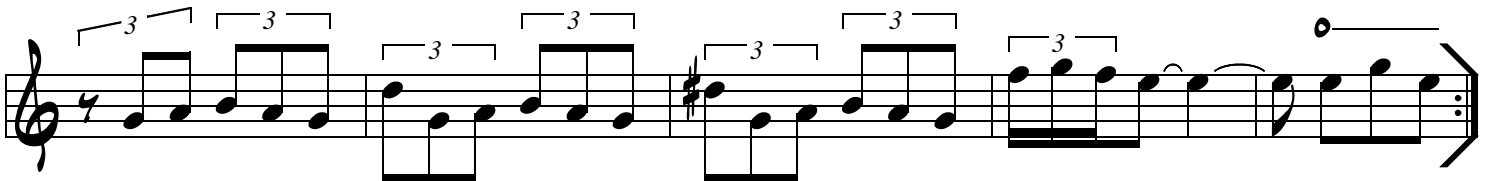
1. | 2.



1.



1.



2.

