

# LA BIGUINE DE L'ETE

12/03/2012


Marc Provance - Dominique Bellot - Nicolas Devoir

## Biguine Zouk

mélodie instruments mi bémol

$\text{♩} = 130$

The introduction consists of a single staff in treble clef with a key signature of two sharps (F# and C#) and a 4/4 time signature. It begins with a tempo marking of a quarter note equal to 130. The melody is primarily composed of eighth notes, with some quarter notes and a final half note. There are four 'x' marks above the staff, indicating specific fret positions for guitar accompaniment.

 **COUplet**

The first line of the 'COUplet' is a single staff in treble clef with a key signature of two sharps. It features a series of eighth notes with accents, followed by a quarter note and a half note. The staff ends with a repeat sign.

The second line of the 'COUplet' continues the melody from the first line, consisting of eighth notes with accents and a quarter note. The staff ends with a repeat sign.

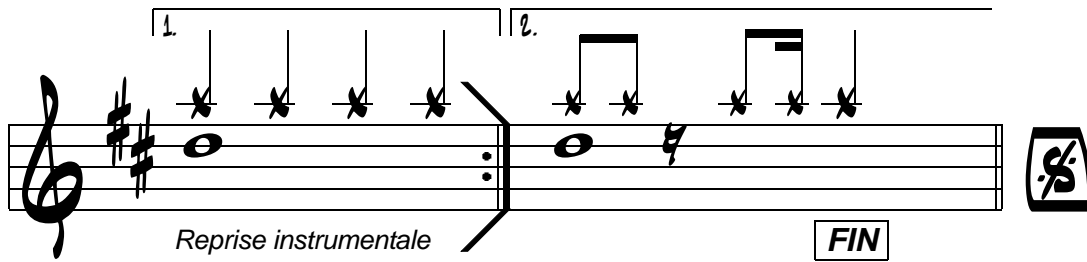
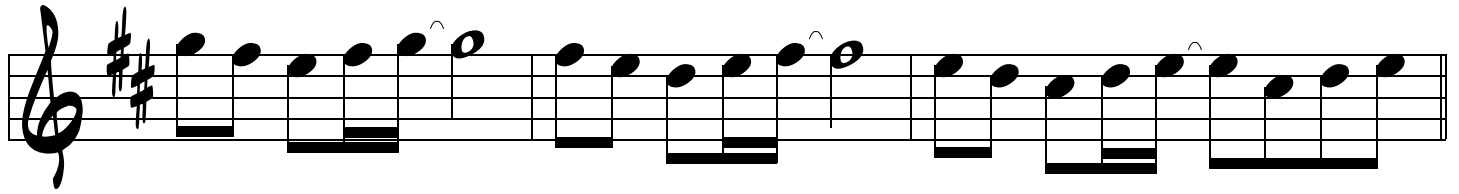
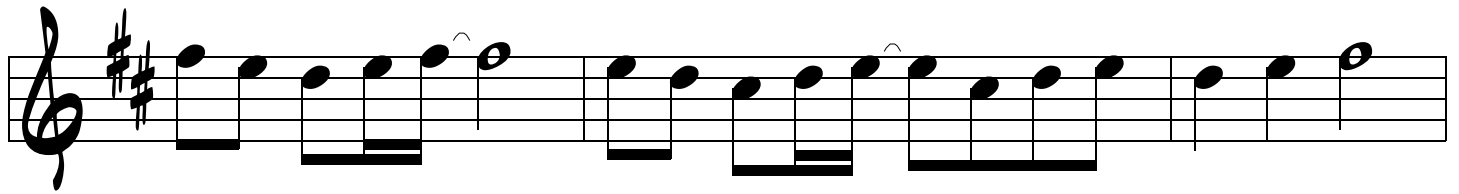
1.

The first ending of the 'COUplet' is a single staff in treble clef with a key signature of two sharps. It contains a sequence of eighth notes with accents, followed by a quarter note and a half note. The staff ends with a repeat sign and a first ending bracket labeled '1.'.

2.

**REFRAIN**

The second ending of the 'COUplet' is a single staff in treble clef with a key signature of two sharps. It contains a sequence of eighth notes with accents, followed by a quarter note and a half note. The staff ends with a repeat sign and a second ending bracket labeled '2.'. Below this, the 'REFRAIN' begins with a new staff in treble clef with a key signature of two sharps, starting with a quarter note and a half note.



Reprise instrumentale

FIN

