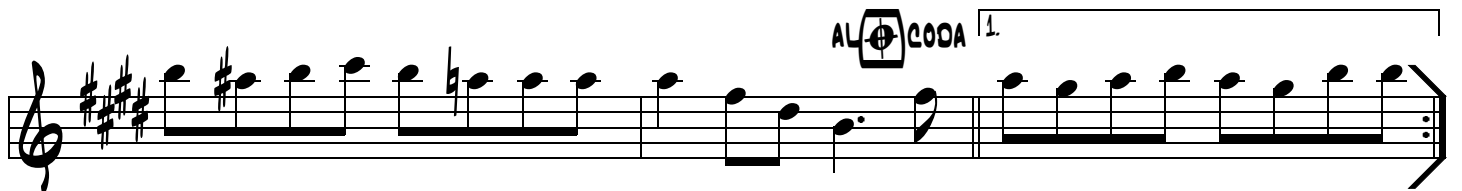
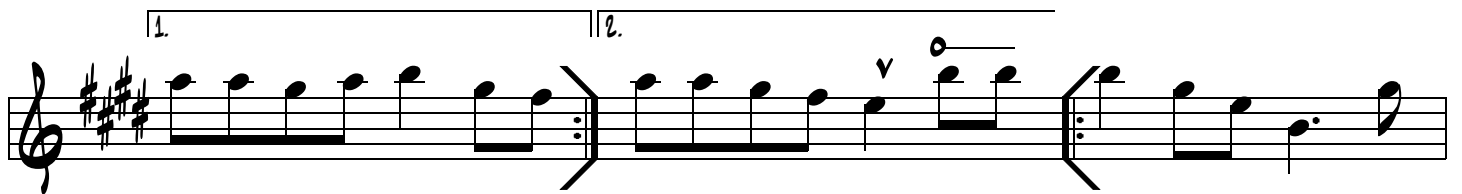
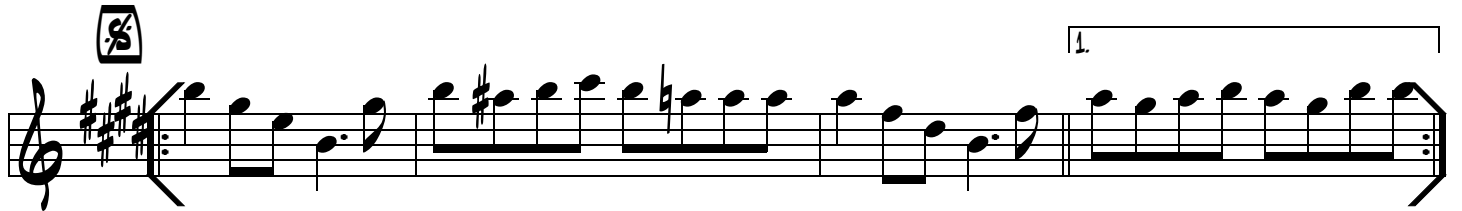
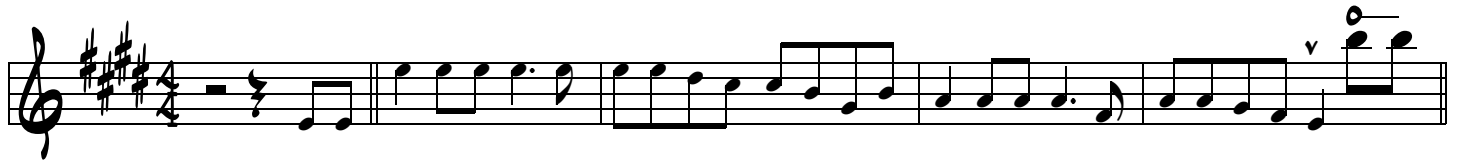


Le Petit Cha Cha Cha

26.03.01

Marc Provance - Dominique Bellot - Sylvie Pullès

Mélodie instruments mi bémol



Musical score for "Le Petit Cha Cha Cha" in G major, 4/4 time. The score consists of seven staves of music. The first staff includes a Coda symbol. The second and third staves feature first and second endings. The fourth and fifth staves also include first and second endings. The sixth staff has a fermata over a half note and a slur over a series of eighth notes. The seventh staff contains a series of chords with accents.