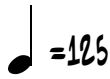


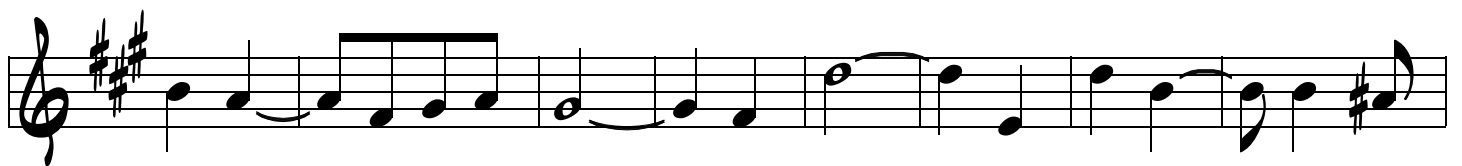
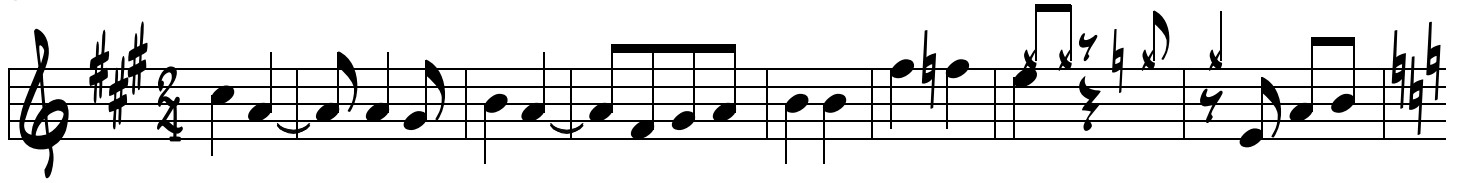
Ma Belle Madrilène

Paroles Clément Guizou Musique Dominique Bellot

Tempo di Paso Doble

Mélodie instruments SI bémol

 =125



The image displays a musical score for the melody of "Ma Belle Madrilène" in G major (three sharps). The score is written on four staves. The first staff begins with a treble clef and a key signature of three sharps. It contains a sequence of notes: G4 (quarter), A4 (quarter), B4 (quarter), C5 (quarter), B4-A4 (beamed eighth notes), G4 (quarter), F#4 (quarter), E4 (quarter), D4 (quarter), C4 (half). Above the staff, the instruction "AL CODA" is written, with a circled cross symbol. The second staff starts with a circled cross symbol and the word "CODA". It contains notes: C4 (quarter), D4 (quarter), E4 (quarter), F#4 (quarter), G4 (quarter), A4 (quarter), B4 (quarter), C5 (quarter), B4-A4 (beamed eighth notes), G4 (quarter), F#4 (quarter), E4 (quarter), D4 (quarter), C4 (half). The third staff continues the melody: C4 (quarter), D4 (quarter), E4 (quarter), F#4 (quarter), G4 (quarter), A4 (quarter), B4 (quarter), C5 (quarter), B4-A4 (beamed eighth notes), G4 (quarter), F#4 (quarter), E4 (quarter), D4 (quarter), C4 (half). The fourth staff features a treble clef and a key signature of three sharps. It begins with a quarter note G4, followed by a half note G4 with a slur over it. This is followed by three measures of eighth-note patterns: G4-A4-B4-C5, G4-A4-B4-C5, and G4-A4-B4-C5. The final measure contains a quarter note G4 with a slur over it, followed by a quarter rest, a quarter note G4 with a slur over it, and a quarter note G4 with a slur over it. A dotted line is positioned below the fourth staff.