

NOCHE EN SEVILLA

Dominique Bellot - Aurélie Gusto - Léopold Lhomme

mélodie instruments mi bémol

First musical staff in treble clef, key signature of three sharps (F#, C#, G#), and 3/4 time signature. It begins with a tempo marking of quarter note = 123. The staff contains a series of eighth and sixteenth notes, including a triplet of eighth notes and a dynamic marking of *v* (accents).

Second musical staff, starting with a repeat sign. It features a triplet of eighth notes and a dynamic marking of *v*.

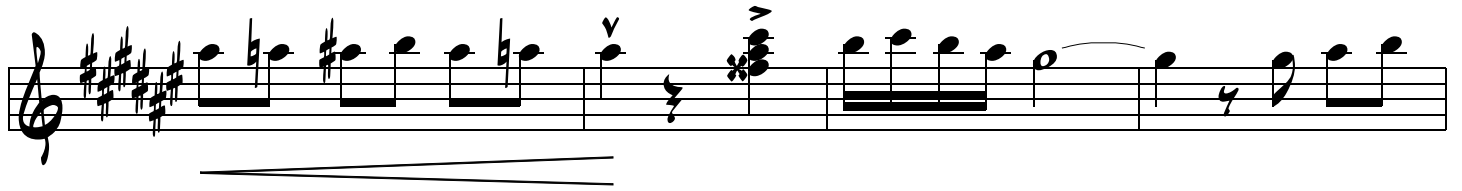
Third musical staff, containing a triplet of eighth notes and a dynamic marking of *v*.

Fourth musical staff, featuring a triplet of eighth notes and a dynamic marking of *v*.

Fifth musical staff, starting with a first ending bracket labeled "1.". It includes a dynamic marking of *v* and ends with a repeat sign.

Sixth musical staff, starting with a second ending bracket labeled "2.". It includes a dynamic marking of *v* and ends with a key signature change to four sharps (F#, C#, G#, D#).

Seventh musical staff, starting with a repeat sign. It includes a dynamic marking of *v* and a triplet of eighth notes.



1.



2.

