

Paso Del Valencia

Jean Harduin - Dominique Bellot

Mélodie instruments Mi bémol

♩ = 116

D.C.

The first staff of music is in treble clef, key of D major (two sharps), and 2/4 time. It begins with a repeat sign and a first ending bracket. The notation includes chords and single notes with accents and slurs.

The second staff continues the melody with eighth-note patterns and slurs.

The third staff features a mix of eighth and sixteenth notes with slurs and accents.

The fourth staff contains eighth-note chords and single notes with slurs.

The fifth staff shows a continuation of the eighth-note patterns with slurs.

1.

The sixth staff begins with a first ending bracket labeled '1.' and contains eighth-note patterns.

1. 3 2.

The seventh staff includes a triplet of eighth notes marked '1. 3' and a second ending bracket labeled '2.'.

3 3

The eighth staff features two triplet markings '3' over eighth notes and concludes with a key signature change to E major (three sharps).

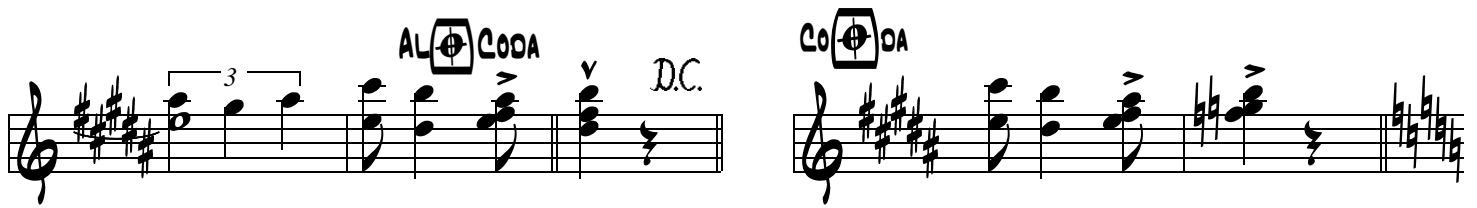
1.



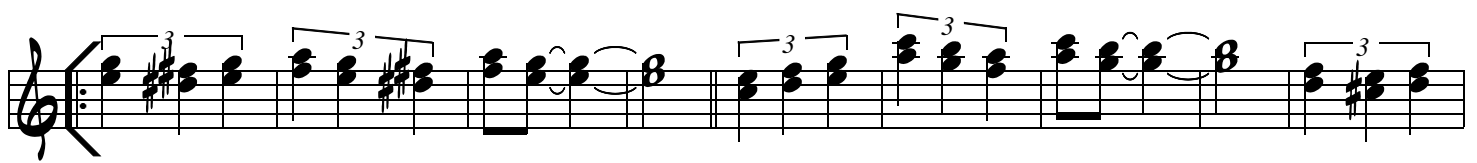
1.



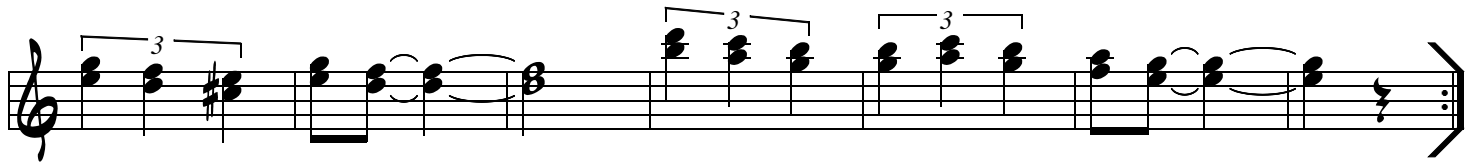
2.



1.



1.



2.

