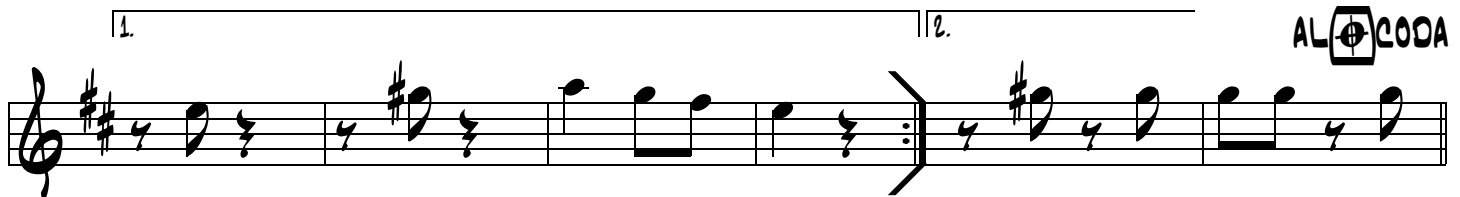
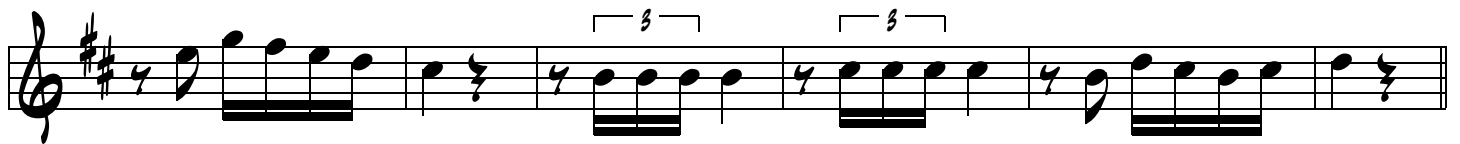
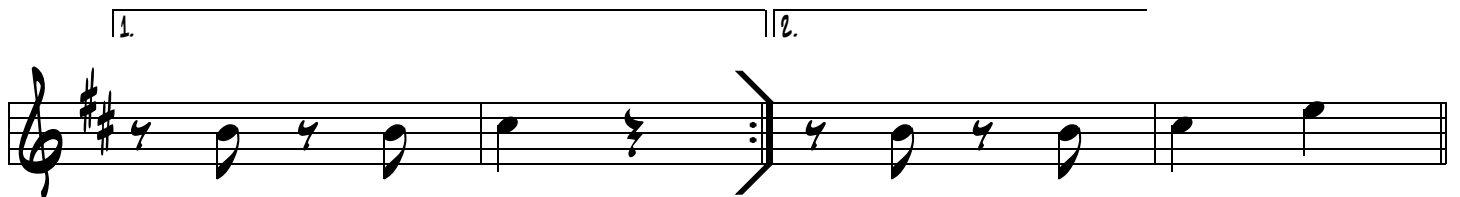
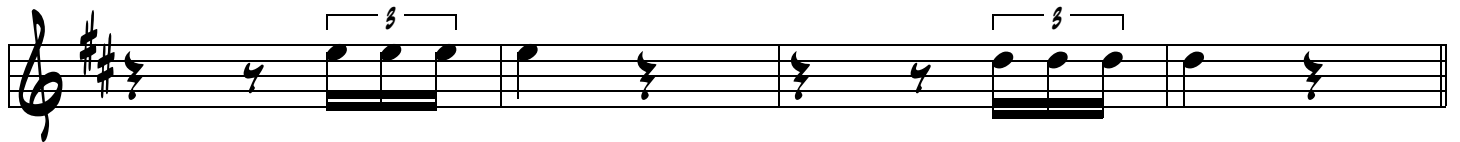
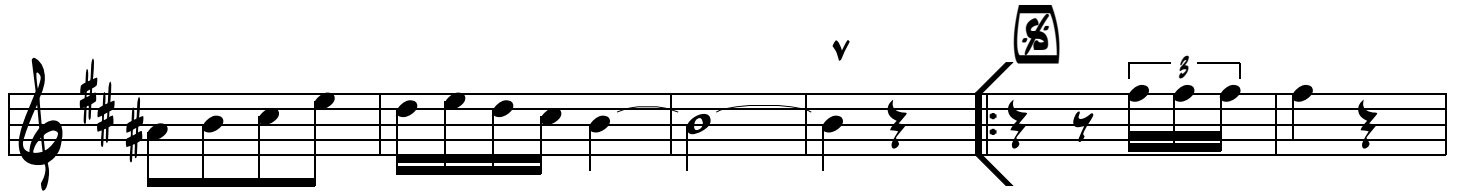
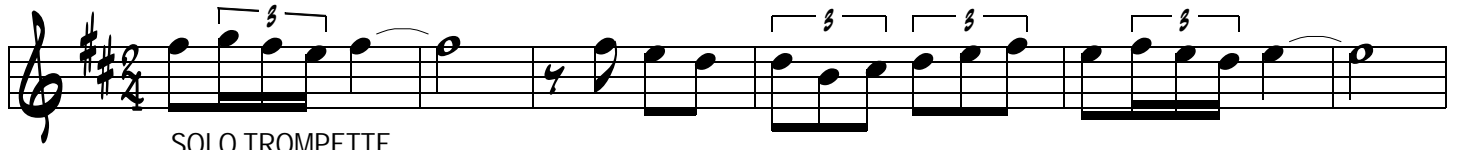


RENDEZ VOUS EN CATALOGNE

Dominique Bellot - Danien Roy - Vanessa Roy - Benoît Gaugain

TROMPETTE si bémol



Musical notation for the first staff, featuring a treble clef, a key signature of two sharps (F# and C#), and a 4/4 time signature. The melody consists of quarter notes: F#4, G4, A4, B4, C5, followed by a quarter rest. A square box containing a stylized 'S' symbol is positioned above the final note.

Musical notation for the second staff, featuring a treble clef, a key signature of two sharps (F# and C#), and a 4/4 time signature. The melody consists of quarter notes: F#4, G4, A4, B4, C5, D5, followed by a quarter rest. Above the first four notes is a square box containing the text 'CO' and a circle with a crosshair, and 'DA' to its right. The staff ends with a double bar line and a key signature change to three sharps (F#, C#, G#).

Musical notation for the third staff, featuring a treble clef, a key signature of three sharps (F#, C#, G#), and a 4/4 time signature. The staff begins with a repeat sign and a fermata over the first measure. The melody consists of quarter notes: F#4, G4, A4, B4, C5, D5, E5, followed by quarter rests. A '2' is written above the first measure.

Musical notation for the fourth staff, featuring a treble clef, a key signature of three sharps (F#, C#, G#), and a 4/4 time signature. The melody consists of quarter notes: F#4, G4, A4, B4, C5, D5, E5, followed by quarter rests. There are two triplets of eighth notes: one over G4, A4, B4 and another over C5, D5, E5.

Musical notation for the fifth staff, featuring a treble clef, a key signature of three sharps (F#, C#, G#), and a 4/4 time signature. The staff is divided into two sections by a horizontal line. The first section, labeled '1.', consists of quarter notes: F#4, G4, A4, B4, C5, D5, followed by quarter rests. The second section, labeled '2.', consists of quarter notes: F#4, G4, A4, B4, C5, D5, followed by quarter rests.

Musical notation for the sixth staff, featuring a treble clef, a key signature of three sharps (F#, C#, G#), and a 4/4 time signature. The melody consists of quarter notes: F#4, G4, A4, B4, C5, followed by a quarter rest.